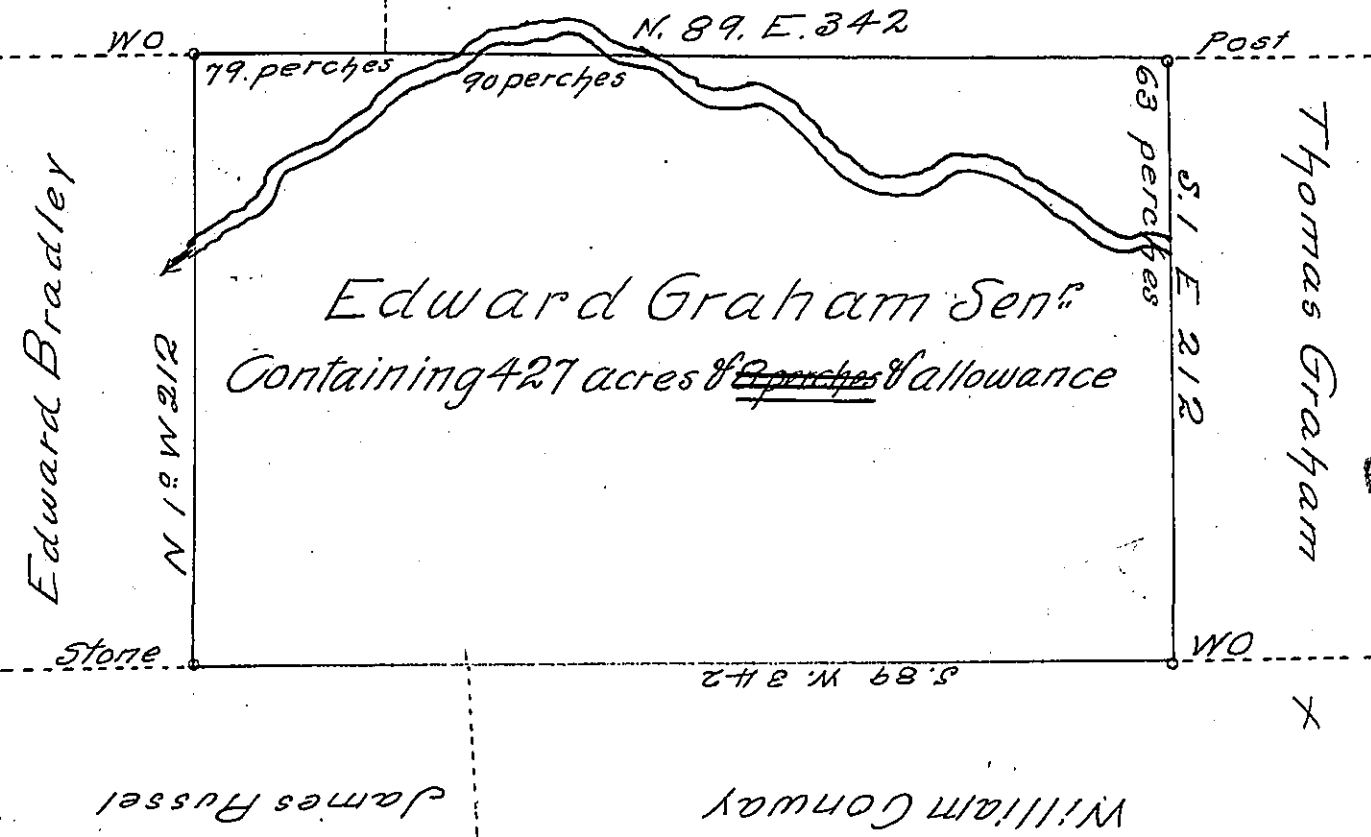


C140-142  
Samuel Meals

C-37-209  
Samuel Campbell



The above is a Draft of a Tract of land Surveyed to Edward Graham the first Day of March A.D. 1813, by Virtue of his actual Settlement and Improvement Containing four hundred and Twenty seven Acres & Eight perches with the allowance of Six per Cent &c. Situate in Parker Township Butler County on the Waters of Slippery Rock Creek.

I do Certify that the land Contained in the above Survey is not Claimed by any other person by Warrant or otherwise, to the best of my knowledge and belief the 2<sup>d</sup> Day of March A.D. 1813

Tho<sup>s</sup> Graham D.S.

To the Surveyor General of Pennsylvania.

N.B. Edward Graham with his family is now actually Residing on the land above Discribed.

Tho<sup>s</sup> Graham D.S.

IN TESTIMONY that the above is a copy of the original remaining on file in the Department of Internal Affairs of Pennsylvania, made conformably to an Act of Assembly approved the 16th day of February, 1833, I have hereunto set my Hand and caused the Seal of said Department to be affixed at Harrisburg, this thirtieth day of November 1904

*Isaac P. Brown*  
Secretary of Internal Affairs.